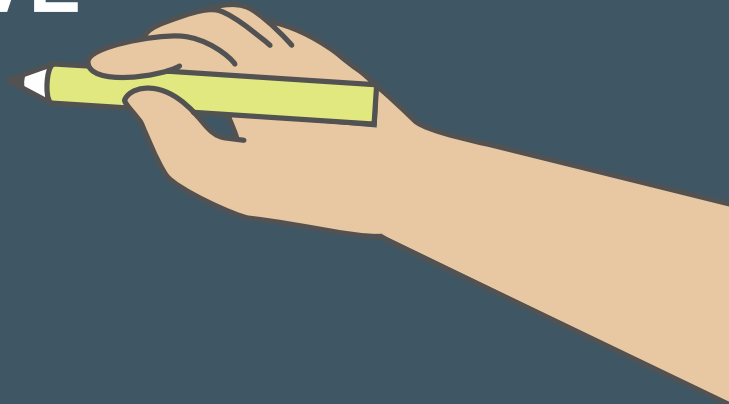


GREATER MANCHESTER HEALTH AND CARE WORKFORCE COLLABORATIVE

Janet Wilkinson
Director of Workforce
Greater Manchester Health and
Social Care Partnership



THE GREATER MANCHESTER HEALTH AND CARE WORKFORCE

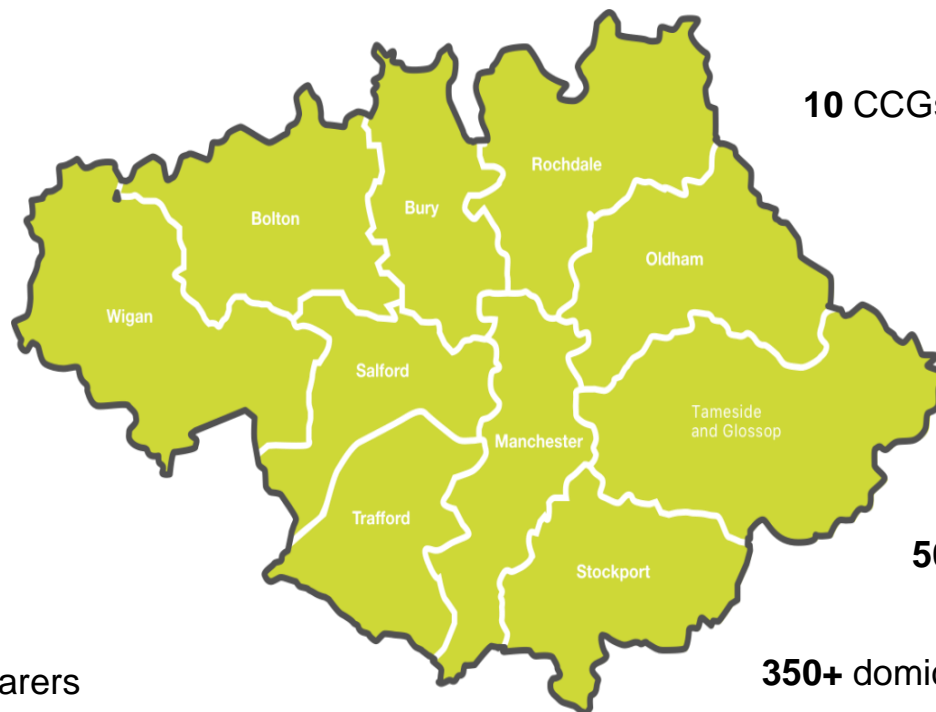
£6 billion devolved budget

10 NHS Trusts

Population of **2.8 million**

10 CCGs & local authorities

Workforce
of **177,000**



2000 primary care
organisations, including
circa **500**
GP practices

160,000+
volunteers

500+ care homes

280,000+
unwaged carers

350+ domiciliary care providers

**Supported by community and voluntary sectors, Healthwatch, Greater Manchester Police and Greater Manchester Fire and Rescue Service.*

THE WORKFORCE PROGRAMME



GREATER MANCHESTER WORKFORCE COLLABORATIVE

GM Strategic Workforce Collaborative Board



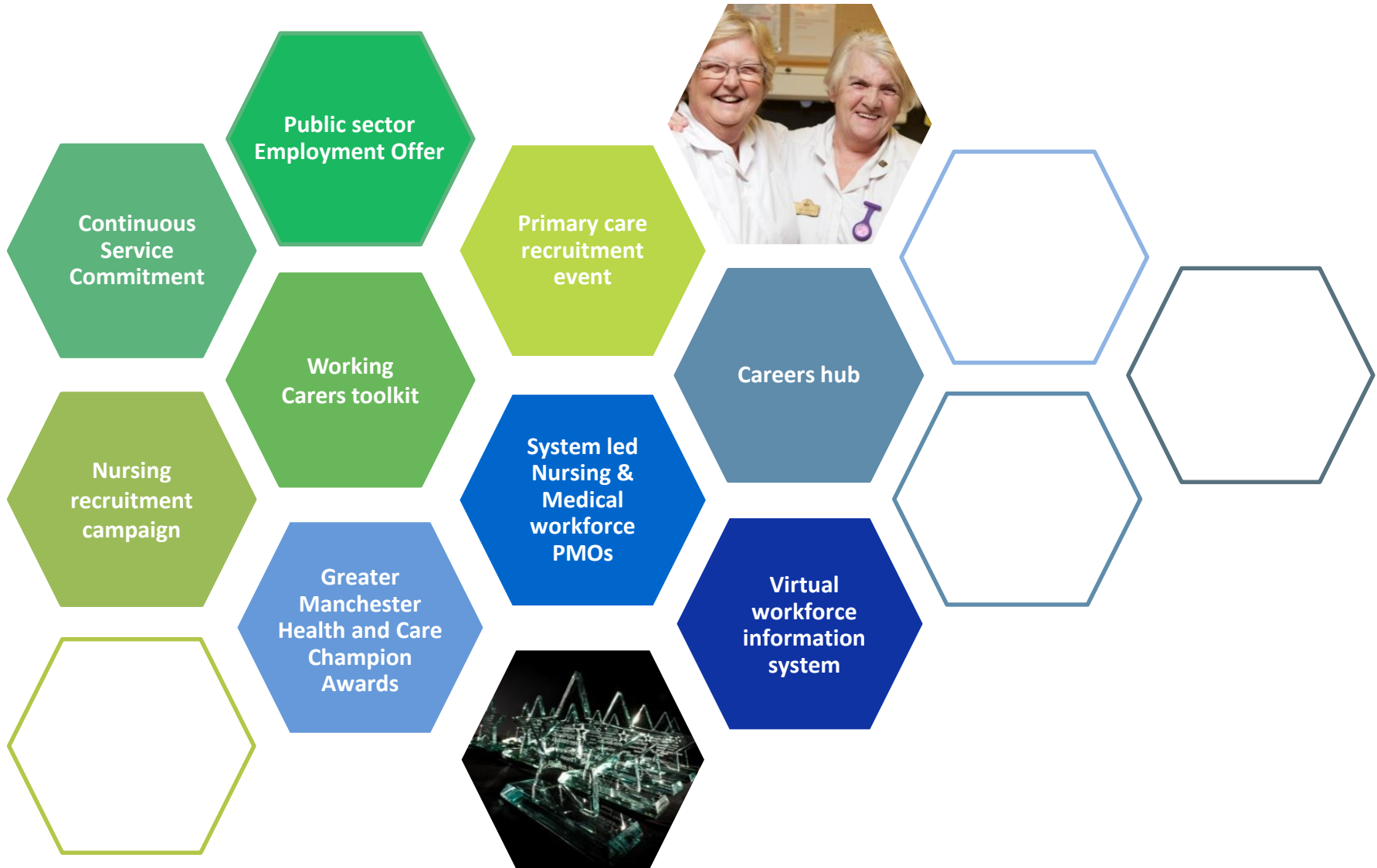
PROGRESS SO FAR

INFRASTRUCTURE, LEADERSHIP AND TALENT



PROGRESS SO FAR

GROW OUR OWN, EMPLOYMENT OFFER AND FILLING DIFFICULT GAPS



PARTNERSHIP WORKING

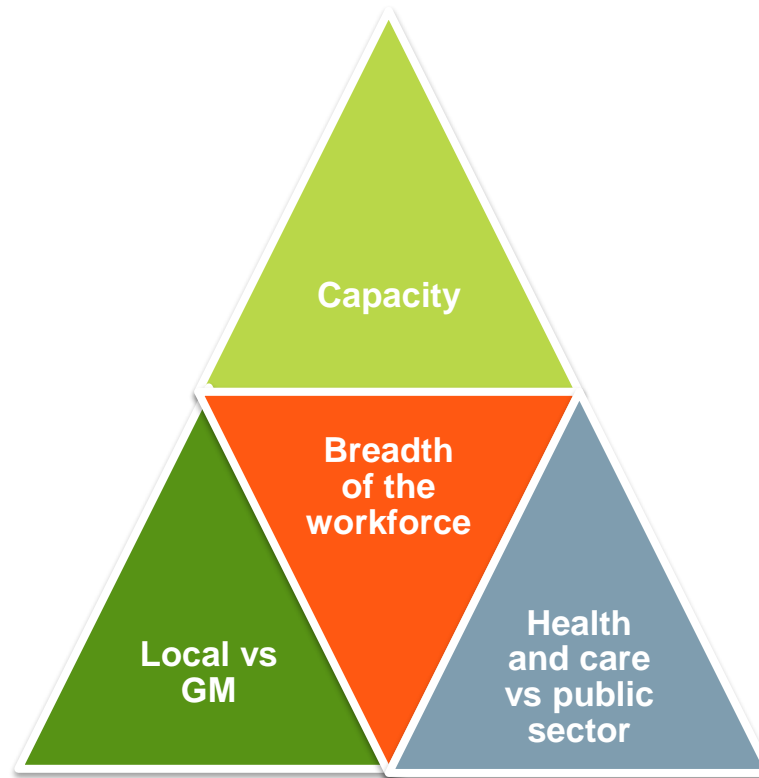
- Stakeholder meetings and events
- Locality workforce groups
- Trade union engagement
- Joint HR and OD networks
- Coordinated approach to tackling workforce race inequality
- System-led initiatives
- Locality workshops and dedicated support
- Public sector reform and supporting the Greater Manchester Model



CORE TEAM SUPPORT

- Programme Management
- Stakeholder engagement
- Sharing best practice
- Linking with the GMCA and wider public sector
- Maximising funding opportunities
- Managing and supporting the GM Workforce Collaborative infrastructure
- Liaising with HEE

CHALLENGES



KEY PRIORITIES FOR THE NEXT SIX MONTHS

- Hold the Greater Manchester Health & Care Champion Awards 2019
- Launch dedicated strategies for: AHPs, primary care workforce and apprenticeships
- Establish integrated health and social care careers hub
- Implement guaranteed employment scheme for nurses
- Cross-boundary working for medical staff to support emergency planning
- Set up network of workforce planning champions
- Establish Greater Manchester Talent Board
- Initiate virtual reality education programme to support careers promotion in schools
- Roll out Physician Associate Preceptorship programme